



The **GLOBE**™

International

Study Abroad | VISA | IMMIGRATION



STUDY IN
UK

INFORMATION BOOKLET ON
STUDY IN **UNITED KINGDOM**

E-LEARNING AND ASSESSMENT PLATFORM



A TO Z SERVICES UNDER ONE ROOF

COACHING • ADMISSION • VISA GUIDELINES • RESETTLEMENT

- ✓ Batches available as per students' learning level, e.g. slow/fast learners
- ✓ Students get seamless services from coaching to study visa & post visa services
 - ✓ Highly educated & well experienced faculty members
 - ✓ State of the art infrastructure
 - ✓ Wide collection of library books with audio-visual facilities
 - ✓ Rolling Batches available

 LEARN ANYTIME  LEARN ANYWHERE
 LEARN VIA LIVE CLASSES  LEARN AT YOUR OWN PLACE
 KEEP MAKING PROGRESS MINUTE BY MINUTE

Map of United Kingdom



Map of England Cities



United Kingdom at a Glance

- Situated in Western Europe, the United Kingdom (UK) is made up of four separate countries: England, Wales, Scotland and Northern Ireland.
- About 95% of the UK's population is English speaker.
- London is the biggest city in the UK. There are also other big cities in England including Birmingham, Manchester, Liverpool, Leeds, Bristol and Newcastle upon Tyne. Edinburgh and Glasgow are big cities in Scotland. Cardiff and Swansea are in Wales & Derry and Belfast are in Northern Ireland.
- **The sixth largest economy in the world**, the UK is also home to the touted financial capital of the world, London. It is also one of the most highly globalized economies in the world, and people from all walks of life and a plethora of countries, come to London to kickstart their financial career. Furthermore, the aerospace industry and pharmacy industry of UK are some of the largest in the world.
- **26 of the world's 500 largest companies have their headquarters set-up in the UK**, and these specialize in a wide array of fields; from the multi-billion-dollar gas and oil company BP (British Petroleum), to one of the leaders in the pharmaceutical industry, GlaxoSmith-Kline. The glamorous skyline of London includes the headquarters of the big four accounting firm, Price Waterhouse Coopers (PwC), one of the world's largest banks, HSBC and, many others.
- Degrees earned from the UK are globally recognized and preferred by employers all over the world.
- Known for its language, history, culture and innovation, **the UK has an average student retention rate of 82%**.
- The UK is also home to some of the finest higher-education institutes in the world, such as Cambridge University. **Four out of the top 10 higher education institutes in the world are from the UK**. Students can apply to many prestigious universities offering world-class degrees in ever-growing fields. Many of the courses up on offer rank in the top 10 in the world, such as the Dentistry course offered by King's College London, is ranked number 1 in the world by QS World University Rankings.
- There are a few fundamental factors like academic excellence, quality education, shorter degree length, undertaking work during study, healthcare benefits available etc. which attract Indian students to study in UK.
- **With over 1.4 million Indians residing in the UK**, the Indian students studying in UK Universities will never feel out of place. Furthermore, the large population of Indian nationals has also prompted the opening of a tremendous number of temples, Indian restaurants and Indian grocery stores throughout the UK.
- London was ranked as the top student city in the world by the QS World University Rankings. A vibrant city which buzzes with life, London makes for an once-in-a-lifetime experience for any student choosing to study in the UK.
- An average part-time salary of about GBP 12500 per annum means that students can also earn quite a good amount to support their stay in the UK. To manage everyday living expenses along with studies, a student can work part-time for up to 20 hours per week during term time and even work full-time during the semester break.

Top Reasons to Study in the United Kingdom

- **Quality education offered:** The degree is globally recognized and preferred by employers all over the world.
- **Wide range of options available:** There are more than 150 Universities in UK, offering wide range of courses.
- **Flexible admission criteria:** For the students not meeting direct admission eligibility criteria, UK universities offer plenty of options like Pre- Sessional, Foundation, IYO, Pre- Master's courses that help in meeting the eligibility criteria.
- For Master's program, 3-year Bachelor's degree is accepted. Also, the students with gap in their studies are eligible, if they have a valid justification.
- **Shorter degree length:** UK offers Master's courses with one year duration, making the students industry-ready in shortest duration as compared with any other country across the globe.
- **Lucrative part time job opportunities:** During study, students can work part time for up to 20 hours per week, earning close to GBP 12500 per annum to support their stay in the UK.
- **Work permit options:** After course completion, work permit of 2 years is issued. Average salary offered during this period ranges between GBP 30,000 to 50,000 per annum. Work permit can be extended; however, depends on the employer and work status of employee.
- International students have access to **free medical treatment** while studying in the UK through the National Health Service (NHS).
- **Opportunities for setting up business after course completion:** If a student has some innovative idea for setting up a new business, UK extends '**Start-up**' visa for 2 years, which can be switched to another visa categories later on.

Education System in the United Kingdom

- The UK education system comprises of large number of institutes providing a diverse range of courses to select as per student's interest.
- If a student wishes to take admission into Bachelor's and Master's degree of their preferred choice, but he/she is not meeting the eligibility criteria for direct admissions, the institutes also provide preparation courses which will help them to reach the required level in terms of academic background or English proficiency.

Intakes

- September
- January
- May/ July/ October (offered by only few universities)

Eligibility Criteria and Program Details

Bachelors

- Minimum academic requirement is 10+2 or 10+3 diploma years with 55% or above
- IELTS requirement is 6.0 bands overall, with no less than 5.5. Most of the Universities also accept TOEFL-iBT, PTE/PTE-UKVI
- IELTS waiver is available for students who have scored 70+ marks in English Subject from CBSE/ICSE/IB. However, IELTS is mandatory for Punjab & Haryana Board Students
- Dependent visa not allowed for bachelor degree
- Study gap of maximum 2 year is acceptable
- Bachelor's Degree Duration: 3 - 4 years with/without placement

Masters / Pre- Masters

- Minimum academic requirement is 55% for the students with 3-year Bachelor's degree and 50% for the students with 4 year Bachelor's degree
- IELTS requirement is 6.5 bands overall, no less than 5.5 bands in each module. Some Universities also accept 6.0 bands, no less than 5.5 bands in each module. Most of the Universities also accept TOEFL-iBT, PTE/PTE-UKVI
- IELTS waiver is available in most of the Universities on basis of 12th English Subject marks. In such a case, Universities will conduct an interview. Also, the student should have passed 12th grade within last 5 years
- IELTS is mandatory for Punjab & Haryana Board Students
- Dependent visa is allowed for master degree
- Study gap of maximum 8-10 years is acceptable providing genuine work Experience.
- Master's Degree Duration: 1 - 2 years with/without placement

- If students have scored less than 50-55% in Bachelor's, they will be eligible for Pre-Master's.
- IELTS requirement is 6.0 bands overall, no less than 5.5 bands in each module.
- Pre-Master's Course Duration: 3 - 6 months leading to Masters

Pathway Courses

Foundation / International Year One

- If students have secured marks between 40-50% in their 12th grade or in Diploma, then they are offered admission in a Foundation course. This course brings them to level enabling enrolment in a Bachelor program.
- Many Universities in the UK also offer admission to students after 10th grade. Students engage in a 1-year foundation course before starting the Bachelor degree.
- The student has to secure 5.5 bands overall in IELTS with no less than 5.5 in each module for admission in Foundation course
- Foundation Duration: 1 year leading to admission in 1st year of Bachelors
- IYO Duration: 1 year leading to admission directly in 2nd year of Bachelors

List of Documents Required

- 10th SSC - Mark Sheet & Passing Certificate
- 12th HSC - Mark Sheet & Passing Certificate
- Diploma's Mark Sheets, Diploma Certificate
- Bachelor's Mark Sheets, Degree Certificate
- Master's Mark Sheets, Degree Certificate
- Degree Certificate/Provisional Degree /Bonafide Certificate from School or College
- IELTS | PTE | TOEFL– iBT score card or MOI letter
- Genuine Work Experience Letter/ Offer Letter/ Salary Slip/ Bank Statement & Updated Resume
- 2 Letter of Recommendation
- Statement of Purpose
- Updated Resume
- Passport Front and Back page

Estimated Expenses in the United Kingdom

Living Cost

- Inside London: 1,334 GBP (approx. INR 1.3 lakh) per month
- Outside London: 1,035 GBP per month (approx. INR 1 lakh)
- *Student needs to show living cost of 9months at the time of admission*

Tuition Fee (approximate)

Education	Tuition Fees
Pre Sessional English	2,500 GBP to 4,500 GBP (for 6-12 weeks)
Foundation	8,000 GBP to 13,500 GBP (for 1 year)
IYO	15,000 GBP to 16,000 GBP (for 1 year)
Bachelor's	12,500 GBP to 16,000 GBP (for 1 year)
Pre Master's	6,000 GBP to 9,000 GBP (for 3 months)
Master's	12,500 GBP to 16,000 GBP (for 1 year)

Estimated Earnings from Part Time Work

(While Studying in United Kingdom)

- Wage rate per hour: **GBP 9.00**
- No. of hours students can work part time in a week: **20**
- Weekly earnings possible for a student - **(20 × GBP 9) = GBP 180**
- No. of weeks in a month: **4** ∴ Monthly part time earnings: **180 × 4 = GBP 720**
- **Students are allowed to work 40 hours per week during their semester breaks**

∴ The earnings would range from GBP 1400 to GBP 1500 per month during semester break

Student Visa (Tier 4) Process Flowchart for United Kingdom

Application Process

- Suggest with/without IELTS
- Arranging all academic documents and prepare profile
- Options of Universities given to student (5 to 6)
- Offer letter will be given by University in 3-4 weeks

Conditional Acceptance

- Tuition fee payment to university (60-100% of 1 year fee)
- Show 28 days old funds (Living cost for 9 months and remaining tuition fee)
- Tuberculosis test (INR 2000)
- Skype interview from University

CAS Letter

- Certificate of Acceptance for Studies
- Received after fulfilling the fund and other requirements mentioned in conditional acceptance letter
- Turnaround time: 15-20 days after interview*
- Maintain Funds till you get Visa Approval

Visa File Submission

- Fill up online visa form and Pay IHS-International Health Surcharge of GBP 720 (INR 72,000 approx. for 1 yr) using Credit Card ONLY.
- After IHS pay visa fees GBP 360 (37,000) approx and select date for file submission to High commission Ahmedabad
- Appear for Biometric at VFS Ahmedabad (Pay INR 2000)

Post- Visa Process

- Get education loan disbursed before traveling to UK, if any*
- Visa will be granted for 3 months (Vignette Visa).
- Within 10 days of arrival in UK, collect BRP (Biometric Residence Permit) from nearest post office or from university
- Final visa granted will be for entire course duration + 4 months

* For admission to Bachelors/ Masters in Mechanical, the students need to submit ATAS report (The Academic Technology Approval Scheme), which takes around 20-25 days for approval.

* For Bachelors program, IHS should be paid for 3 years (approx. INR 1.5 lakhs)

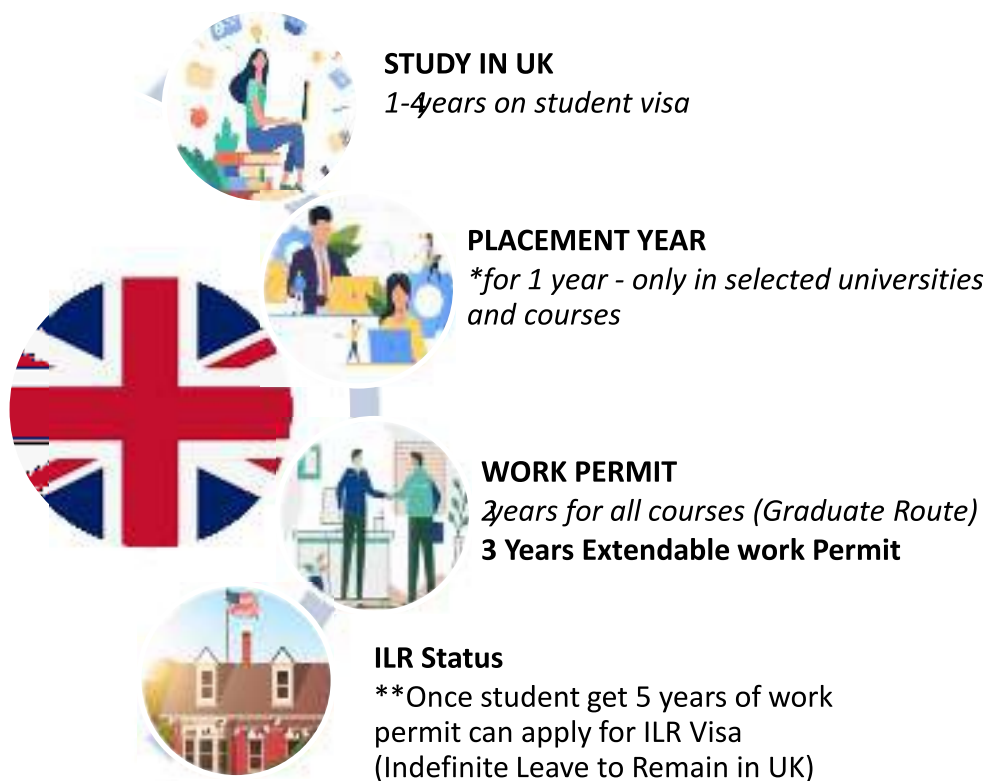
* Standard visa process takes 20-25 working days and the charges are INR 36,000. In priority visa category, the process completes in 5 working days and the charges are 58,000.

Funds to Show for Receiving CAS Letter from the University

	MAIN APPLICANT	DEPENDENT (Spouse)
Funds Required	9 Months*GBP 1334 (Inner London) 9 Months*GBP 1035 (Outer London) +Remaining tuition fees	9 Months*GBP 845 (Inner London) 9 Months*GBP 645 (Outer London)
How can you show these funds	Savings Account, Fixed Deposit, Education Loan from NATIONALIZED BANK	Savings Account, Fixed Deposit from NATIONALIZED BANK
Who can hold the funds	Parents and students	Parents and dependents

- Funds should be 28 days old for CAS Letter
- Funds should remain in the account till the student receives VISA approval.

Career Progression of International Students in the United Kingdom



37	University of Gloucestershire	Cheltenham	76	Kingston University	Kingston
38	Canterbury Christ Church University	Canterbury			
39	Edinburgh Napier University	Edinburgh			

Below Institutes Offer Foundation/ Pathway Programs

77	Cambridge Ruskin International College Anglia Ruskin University (Cambridge)	Cambridge
78	Hertfordshire International College	Hertfordshire
79	International college Portsmouth	Portsmouth
80	The College Swansea University	Wales
81	London Brunel International College	London
82	University of Plymouth International College	Plymouth
83	International College Robert Gordon University	Scotland
84	Birmingham city University International College	Birmingham
85	University of Northampton International College	Northampton
86	University of Leicester International College	Leicester
87	Nottingham Trent International College	Nottingham
88	Glasgow International College	Glasgow
89	University of Liverpool International College	Liverpool
90	Kaplan International College (KIC) London	London
91	Bournemouth University International College	Bournemouth
92	University of Brighton International College	Brighton
93	University of Essex International College	Essex
94	University of Nottingham International College	Nottingham
95	Glasgow International College	Glasgow, Scotland
96	University of Aberdeen International Study Centre	Aberdeen, Scotland
97	Bellerbys College Study Centre	England
98	Cardiff University International Study Centre	Cardiff, Wales
99	Coventry University London International College Study Centre	Coventry, England
100	Durham University International Study Centre	Durham, England
101	University of Huddersfield International Study Centre	Huddersfield, England
102	Kingston University International Study Centre	England
103	Lancaster University International Study Centre	Lancashire, England
105	University of Leeds International Study Centre	Leeds, England
106	University of Lincoln International Study Centre	
107	Liverpool John Moores University International Study Centre	Liverpool, England
108	Royal Holloway International Study Centre	Egham, England
109	Leeds Beckett University International Study Centre	Leeds, England
110	University of Strathclyde International Study Centre	Glasgow, Scotland
111	University of Surrey International Study Centre	Guilford, England
112	University of Sussex International Study Centre	Brigton, England
113	University of York International Pathway College	York
114	University College Dublin International Study Centre	Dublin, Ireland

High Demand Occupations in the United Kingdom

Management	Healthcare	Engineering	Information Technology
Project Manager	Specialist Nurse	Mechanical Engineer	Data Scientist
Business Analyst	Physical Therapist	Surveyor & Estimator	Software Engineer
Accountant	Pharmacy Manager	Geoscience Engineer	Graphic Designer
	Personal Care Worker	Production Manager	Software Developer
Executive Assistant	Dentist	Chemical Engineer	Data Analyst
Human Resource Manager	Anaesthesiologist	Diagnostics Technician (Light Vehicle)	IT Business Analyst
Bank Teller	Epidemiologist	Maintenance Technician	IT Programmer

Best Career Search Portals in the United Kingdom

1. **CV-LIBRARY** - <https://www.cv-library.co.uk/>
2. **INDEED** - <https://www.indeed.co.uk/>
3. **TOTALJOBS** - <https://www.totaljobs.com/>
4. **REED** - <https://www.reed.co.uk/>
5. **MONSTER** - <https://www.monster.co.uk/>
6. **ADZUNA** - <https://www.adzuna.co.uk/>
7. **GLASSDOOR** - <https://www.glassdoor.co.uk/index.htm>
8. **CW JOBS** - <https://www.cwjobs.co.uk/>
9. **GUARDIAN JOBS** - <https://jobs.theguardian.com/>
10. **WORKINSTARTUPS** - <https://workinstartups.com/>

Website and Resources

Here is a list of helpful websites related to the UK admissions and visa process

1. <https://www.theuniguide.co.uk/> - Provides student satisfaction ratings, and other useful student-related information about most universities.
2. <https://www.ucas.com/city-guides> - Provided by the UCAS, which also handles your application, these city guides will help you find accurate information about student places, halls, cost of living, etc. in the city of your choice.
3. <https://www.ucas.com/> - The official UCAS website provides a goldmine of information about each university, complete with fees, costs of living, admission requirements and much more.
4. <https://www.topuniversities.com/university-rankings/> - Allows you to compare universities, and find in-depth information about rankings in specific subjects and degree programmes.
5. <https://www.theguardian.com/education/ng-interactive/2019/jun/07/university-league-tables-2020> - A news agency which carries out extensive student experience surveys to generate separate indices of different aspects of University life.

Estimated Expenses for UK Student Visa

Sr. No	Description of Expenses	Amount	
1	IELTS/ PTE Coaching Fee	Rs. 12,999 + GST	Rs. 10,000 + GST
3	IELTS / UKVI IELTS/PTE/ PTE UKVI Exam Fee	Rs. 14,700 (Academic) Rs. 15,700 (UKVI)	GBP 150
4	<ul style="list-style-type: none"> • Consulting Fee • Application process detailed explanation • Guidelines of documents required for application • Applications to 2-3 Universities • Follow- up with universities about offer letter status • Interview Preparation • Guidelines for tuition fees payment & receiving CAS Letter • Guidelines for Fund/Finance • Visa File Preparation 	FREE	
5	Tuition Fees Payment (Annual)	12,000 - 15,000 GBP (12-15 lakh INR Approx.)	
6	Visa Application fee	360 GBP (Rs. 36,000)	
7	Health Surcharge	750 GBP per year (Rs. 75,000)	
8	Medical Report	Rs. 2,000	
9	VFS Charges	INR 2000	
10	Air Ticket	Rs. 30,000 to 60,000/- Approx.	
11	Shopping	Rs. 40,000 to 50,000/- Approx.	
12	After Visa, amount to be carried by the student	GBP 1500	
13	Approximate Total Expenses (Estimated Cost Minimum to Maximum)	Rs. 16,00,000 - Rs. 20,00,000	

NOTE:

1. We do not offer any admission or visa guarantee scheme at Kanan International Private Limited
2. All categories of fees mentioned above are strictly non-refundable once paid. Estimated cost depends upon the Universities selected
3. Tuition fees may vary between 12,000 GBP to 20,000 GBP and it depends upon College/University selected
4. Accommodation cost may depend upon amenities and facilities that you require. It may be between 300-500 GBP if living in sharing/PG basis. City & State also influence the living cost

Counselor's Remarks

Study Abroad | VISA | IMMIGRATION

Study Abroad

Diploma | Bachelors | Masters



CANADA



GERMANY



AUSTRALIA



UK



USA

COACHING

IELTS

GERMAN LANGUAGE

GRE • TOEFL

GMAT • PET • SAT

Spoken English

Study in India

MBBS | Engineering

Dental | BAMS | BHMS

Physiotherapy

BPham | DPham

MBBS / MD Abroad



RUSSIA



PHILIPPINES



GEORGIA



KAZAKHSTAN



KYRGYZSTAN



 **FREE** Study **in** GERMANY

📍 305 & 306, Krishna Corn Arch - 4, Opp. Sinhar School,
Nr HP Pump, University Road, Rajkot

✉ info@theglobeinternational.com 🌐 www.theglobeinternational.com

☎ 95377 51387, 83201 08762